

SUITE 200, 633 W MAIN ST

633 W MAIN STREET MADISON WI, 53703

AVAILABLE: NOW

SIZE : 2,319 SF

- 5 PRIVATE OFFICES
- 1 CONFERENCE ROOM
- LOBBY/RECEPTION
- 5 WORK STATIONS
- BARREL VAULTED CEILING, EXPOSED DUCT WORK, AND SKYLIGHTS
- AMPLE SURFACE PARKING
- IMMEDIATE BIKE PATH ACCESS
- OPERABLE WINDOWS
- ONSITE MANAGEMENT
- OUTDOOR SEATING
- MODIFICATIONS TO EXISTING LAYOUT ARE POSSIBLE



(608)251-3337

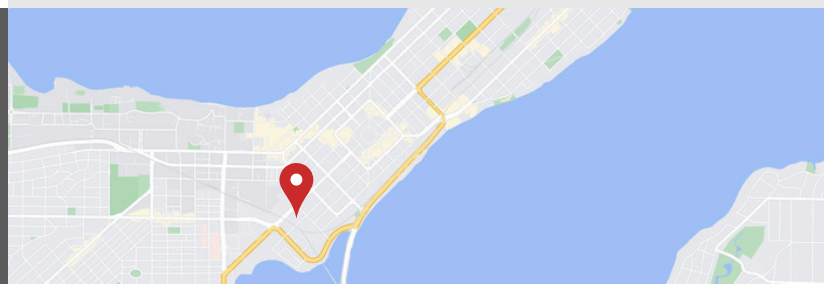
JUDY@DELTA-PROPERTIES.COM

WWW.DELTA-PROPERTIES.COM

SCAN TO VIEW

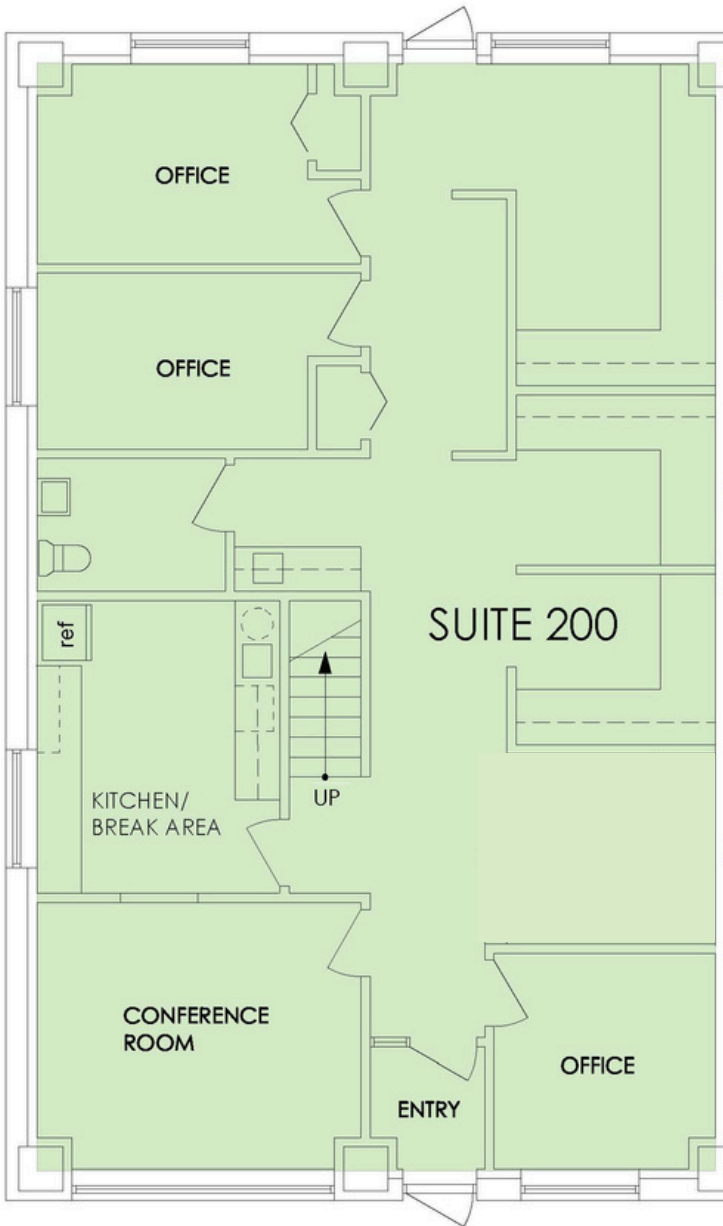


OUR WEBSITE

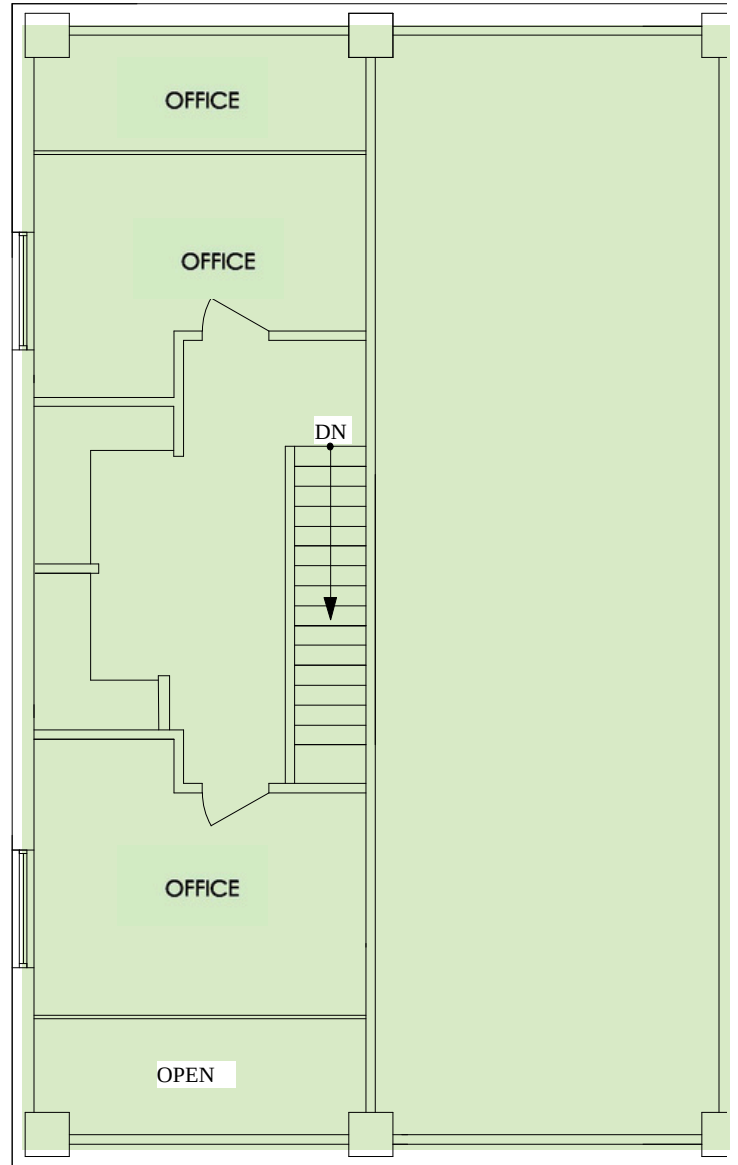


633 W MAIN ST

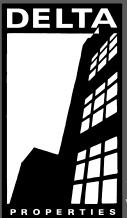
633 W MAIN STREET MADISON WI, 53703



FLOOR 1



MEZZANINE



(608)251-3337
JUDY@DELTA-PROPERTIES.COM
WWW.DELTA-PROPERTIES.COM

SCAN TO VIEW



OUR WEBSITE

