

3,539 - 8,126 SF OFFICE SPACE FOR LEASE

CBRE



634

**WEST MAIN STREET**

MADISON | WISCONSIN

OWNED & MANAGED BY:

**DELTA**  
PROPERTIES

# PROPERTY OVERVIEW

The Kroger Grocery Warehouse is a four-story brick building with a heavy timber interior. The building has been converted to unique office space, and is now home to advanced software and web developers, environmental advocates, engineers, and financial service firms.

The Kroger building is on the Southwest Bike Path, with easy access to the University and central Madison neighborhoods. The shared outdoor patio with picnic tables is an inviting space for breaks or outdoor meetings.

|                    |   |
|--------------------|---|
| Address            | 634 West Main Street<br>Madison, Wisconsin 53703        |
| Available Space    | Suite 100 - 3,539 RSF<br>Suite 400 - 8,126 RSF          |
| Base Rate          | \$25.50/SF MG - Suites 100<br>\$29.50/SF MG - Suite 400 |
| Operating Expenses | Included in Base Rent                                   |
| Utilities          | By Tenant   |
| Janitorial         | By Tenant   |
| Lease Term         | 2 - 5 Years   |
| Parking            | Ample surface parking available<br>at monthly rates     |



# SITE FEATURES

## UNIQUE INTERIOR

Exposed brick, wood beams,  
and abundant natural light

## OUTDOOR AMENITIES

Outdoor Patio and Immediate Bike  
Path Access

## ENERGY EFFICIENT

Energy Efficient Light Fixtures and  
High Efficiency HVAC & MERV13  
Air Filters

## PRIME LOCATION

Close Proximity to Capitol Square  
& Kohl Center

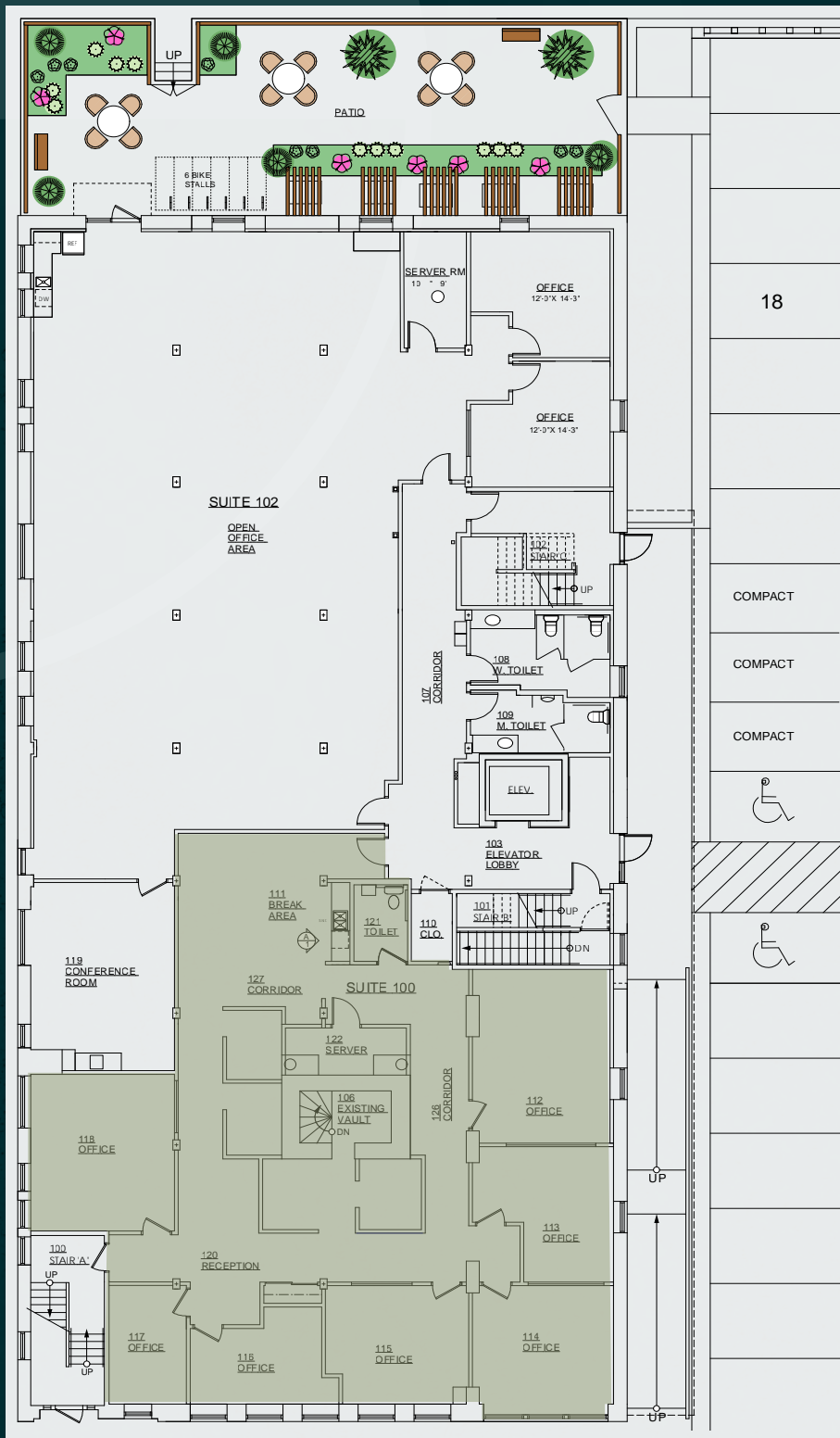
## ADDITIONAL FEATURES

- Operable Windows
- Onsite Management
- Common Area Restrooms, Shower Facilities
- ADA Accessible

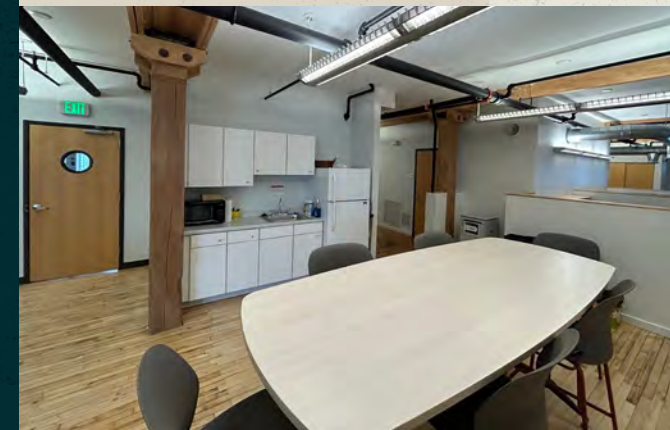


# SUITE 100

3,539 SF



- 7 private offices/meeting rooms
- Open work area with built-in workstations
- Reception area
- Open kitchen/break area
- In-suite restroom

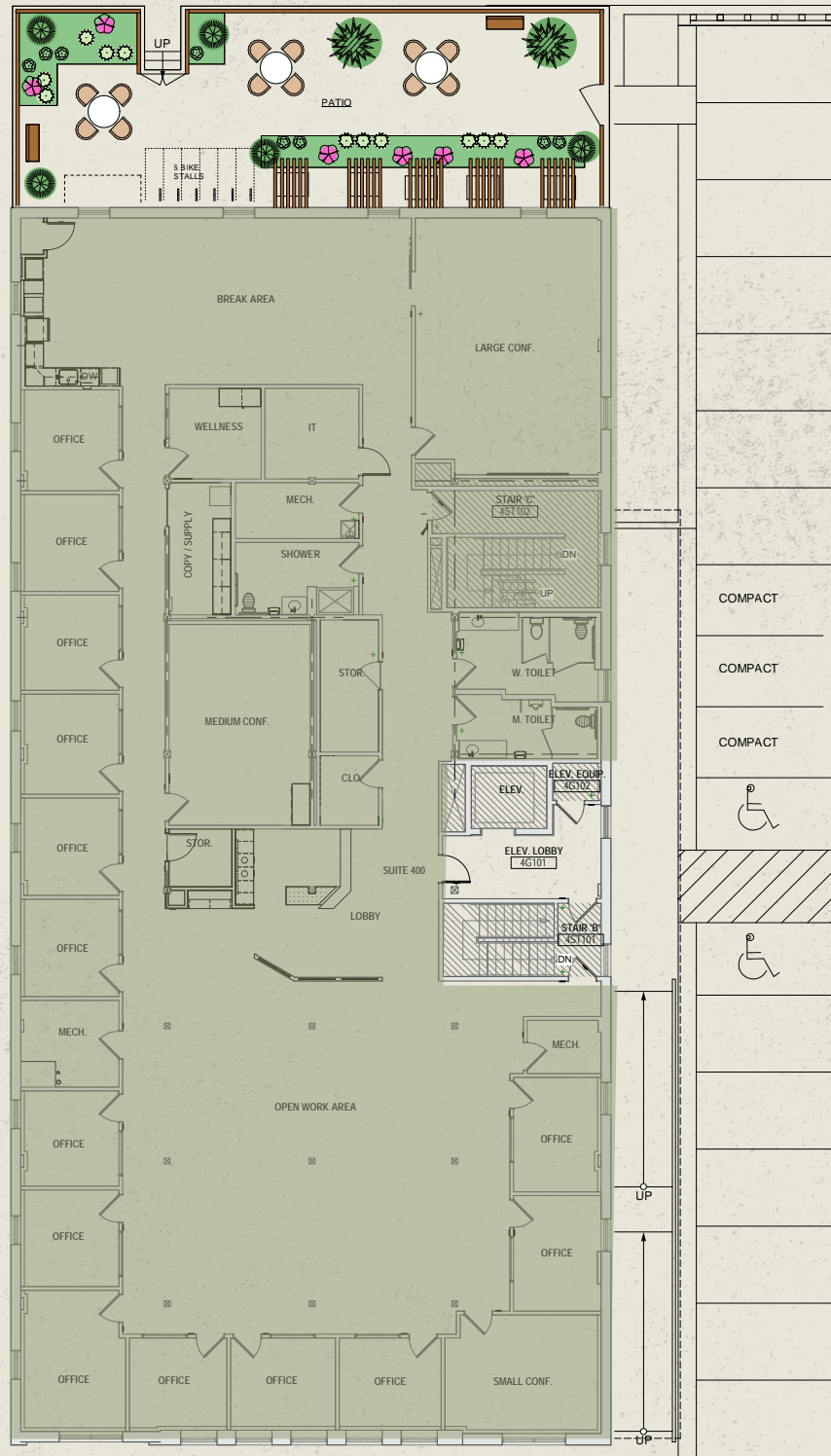


# SUITE 400

8,126 SF



Click the icon to take a virtual tour of the space



## RECENTLY RENOVATED CLASS A SPACE

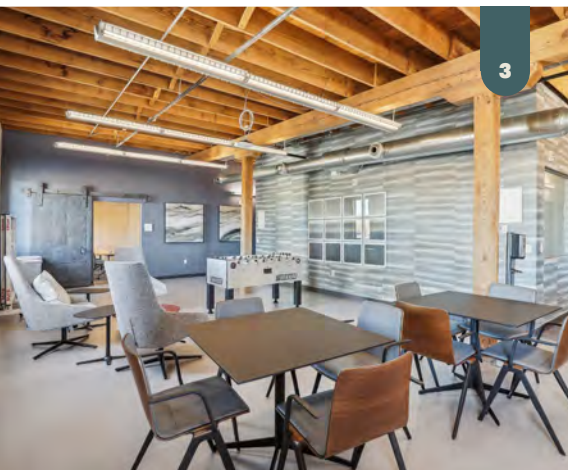
- Full floor suite
- 14-15 private offices
- 3 conference rooms
- Open work area
- Reception area
- Kitchen / break room
- Server room with separate cooling
- Three in-suite restrooms (1 with shower)
- Furniture may be available



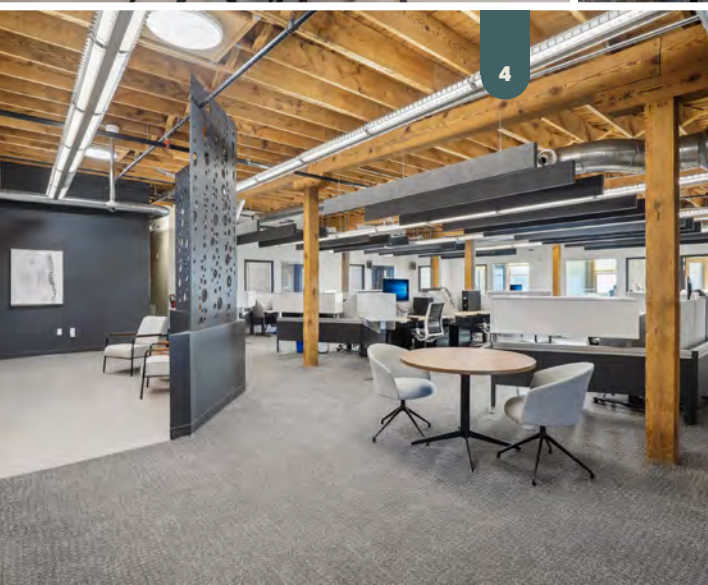
1



2



3



4



5



6

# SUITE 400

8,126 SF

[1] Huddle Area

[2] Training Room

[3] Break Room

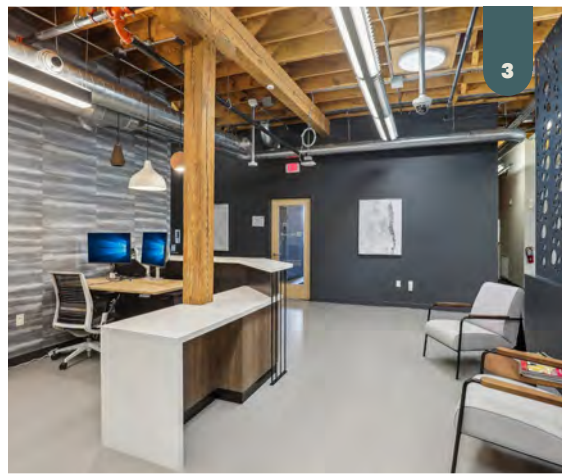
[4] Open Office Layout

[5] Work Station

[6] Conference Room

# SUITE 400

8,126 SF



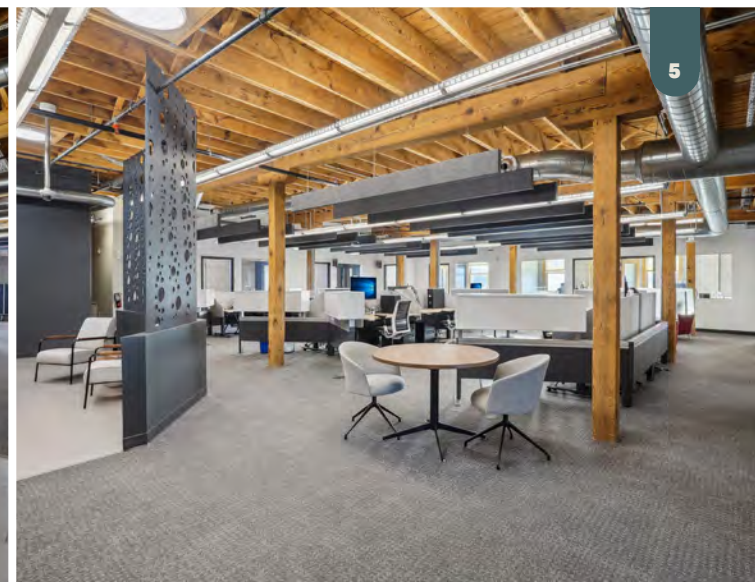
[1] Small Conference Room

[2] Kitchen

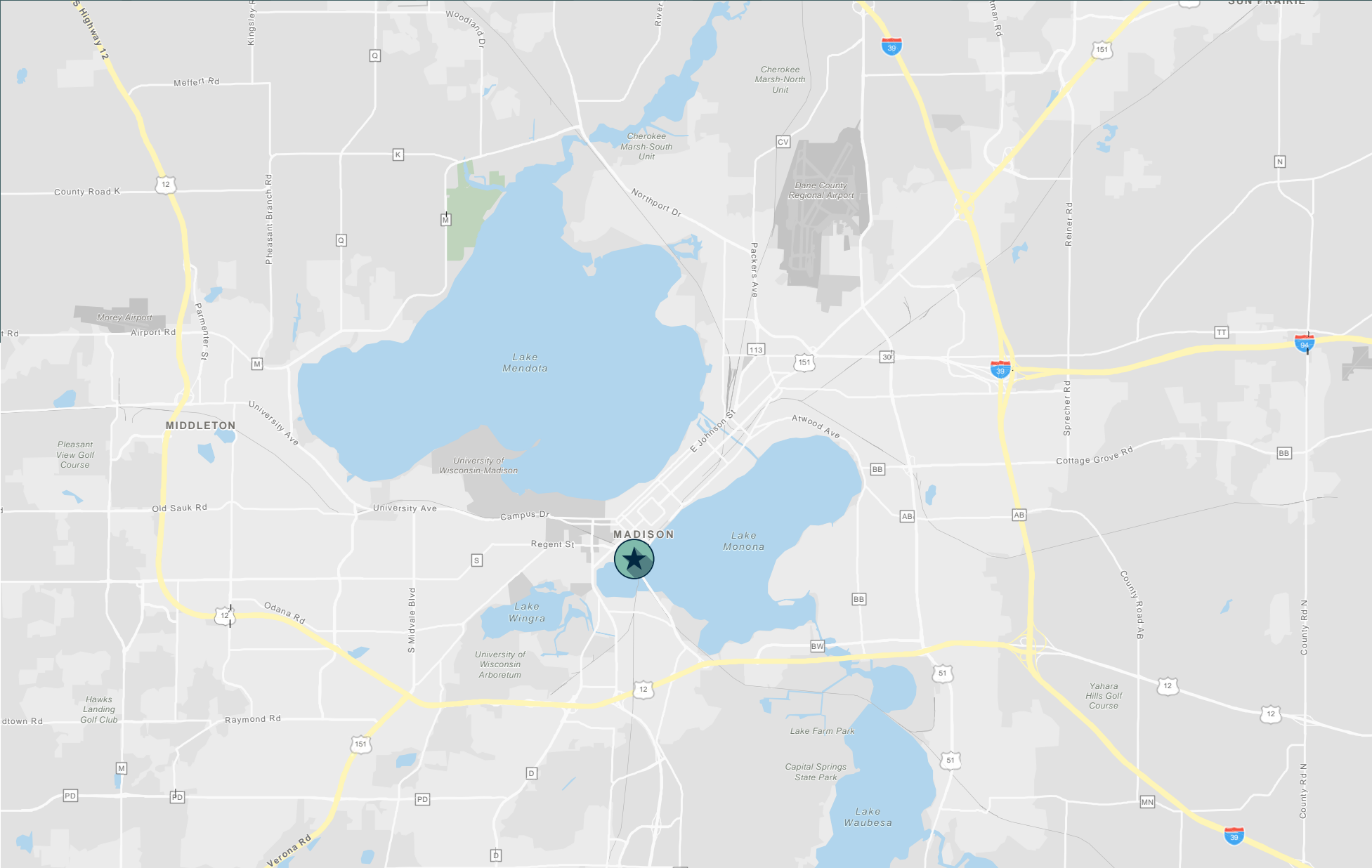
[3] Reception Area

[4] Front of Office

[5] Open Office Space



# LOCATION MAP





# AREA AMENITIES



# 634

## WEST MAIN STREET

MADISON | WISCONSIN

**CHASE BRIEMAN**

Senior Vice President

+1 608 441 7571

[chase.brieman@cbre.com](mailto:chase.brieman@cbre.com)

**JAMES WEST**

Vice President

+1 608 441 7578

[j.west@cbre.com](mailto:j.west@cbre.com)

© 2025 CBRE, Inc. All rights reserved. This information has been obtained from sources believed reliable but has not been verified for accuracy or completeness. CBRE, Inc. makes no guarantee, representation or warranty and accepts no responsibility or liability as to the accuracy, completeness, or reliability of the information contained herein. You should conduct a careful, independent investigation of the property and verify all information. Any reliance on this information is solely at your own risk. CBRE and the CBRE logo are service marks of CBRE, Inc. All other marks displayed on this document are the property of their respective owners, and the use of such marks does not imply any affiliation with or endorsement of CBRE. Photos herein are the property of their respective owners. Use of these images without the express written consent of the owner is prohibited.

**CBRE**

OWNED & MANAGED BY:



# State of Wisconsin Broker

## To Non-Residential Customers

Wisconsin law requires all real estate licensees to give the following information about brokerage services to prospective customers.

Prior to negotiating on your behalf the broker must provide you the following disclosure statement:

### Broker Disclosure to Customers

You are the customer of the broker. The broker is either an agent of another party in the transaction or a subagent of another broker who is the agent of another party in the transaction. The broker, or a salesperson acting on the behalf of the broker, may provide brokerage services to you. Whenever the broker is providing brokerage services to you, the broker owes you, the customer the following duties:

- The duty to provide brokerage services to you fairly and honestly.
- The duty to exercise reasonable skill and care in providing brokerage services to you.
- The duty to provide you with accurate information about market conditions within a reasonable time if you request it, unless disclosure of the information is prohibited by law.
- The duty to disclose to you in writing certain material adverse facts about a property, unless disclosure of the information is prohibited by law (see "Definition of Material Adverse Facts" below).
- The duty to protect your confidentiality. Unless the law requires it, the broker will not disclose your confidential information of other parties.
- The duty to safeguard trust funds and other property the broker holds.
- The duty, when negotiating, to present contract proposals in an objective & unbiased manner and disclose the advantages and disadvantages of the proposals.

Please review this information carefully. A broker or salesperson can answer your questions about brokerage services, but if you need legal advice, tax advice, or a professional home inspection, contact an attorney, tax advisor, or home inspector. This disclosure is required by section 452.135 of the Wisconsin Statutes and is for information only. It is a plain language summary of a broker's duties to a customer under section 452.133(l) of the Wisconsin Statutes.

### Confidentiality Notice to Customers

Broker will keep confidential any information given to broker in confidence, or any information obtained by broker that he or she knows a reasonable person would want to be kept confidential by law, or authorize the broker to disclose particular information. A broker shall continue to keep the information confidential after broker is no longer providing brokerage services to you.

The following information is required to be disclosed by law.

1. Material adverse facts, as defined in section 452.01(5g) of the Wisconsin statutes (see "definition of material adverse facts" below).
2. Any facts known by the broker that contradict any information included in a written inspection report on the property or real estate that is the subject of the transaction. To ensure that the broker is aware of what specific information below. At a later time, you may also provide the broker with other information that you consider to be confidential.

CONFIDENTIAL INFORMATION: \_\_\_\_\_

NON-CONFIDENTIAL INFORMATION (The following information may be disclosed by Broker): \_\_\_\_\_

(Insert information you authorize to broker to disclose such as financial qualification information.)

### Consent to Telephone Solicitation

I/We agree that the Broker and any affiliated settlement service providers (for example, a mortgage company or title company) may call our/my home or cell phone numbers regarding issues, goods and services related to the real estate transaction until I/ we withdraw this consent in writing.

List Home/Cell Numbers: \_\_\_\_\_

### Sex Offender Registry

*Notice: You may obtain information about the sex offender registry and persons registered with the registry by contacting the Wisconsin Department of Corrections on the Internet at <http://offender.doc.state.wi.us/public/> or by phone at (608)240-5830. <http://offender.doc.state.wi.us/public/> or by phone at (608) 240-5830.*

### Definition of Material Adverse Facts

A "material adverse fact" is defined in Wis. Stat. 452.01 (5g) as an adverse fact that a party indicates is of such significance, or that is generally recognized by a competent licensee as being of such significance to a reasonable party that it affects or would affect the party's decision to enter into a contract or agreement concerning a transaction or affects or would affect the party's decision about the terms of such a contract or agreement. An "adverse fact" is defined in Wis. Stat. 452.01 (1e) as a condition or occurrence that a competent licensee generally recognizes will significantly adversely affect the value of the property, significantly reduce the structural integrity of improvements to real estate, or present a significant health risk to occupants of the property, or information that indicates that a party to a transaction is not able to or does not intend to meet his or her obligations under a contract or agreement made concerning the transaction.

*No representation is made as to the legal validity of any provision or the adequacy of any provision on any specific transaction.*