

# SUITE 100, 633 W MAIN ST

633 W MAIN STREET MADISON WI, 53703

**AVAILABLE: NOW**

**SIZE : 5,485 SF**

- 9 PRIVATE OFFICES
- 2 CONFERENCE ROOMS
- LOBBY/RECEPTION
- 16 WORK STATIONS
- BARREL VAULTED CEILING, EXPOSED DUCT WORK, AND SKYLIGHTS
- AMPLE SURFACE PARKING
- IMMEDIATE BIKE PATH ACCESS
- OPERABLE WINDOWS
- ONSITE MANAGEMENT
- SHOWER FACILITIES
- OUTDOOR SEATING
- MODIFICATIONS TO EXISTING LAYOUT ARE POSSIBLE



(608)251-3337

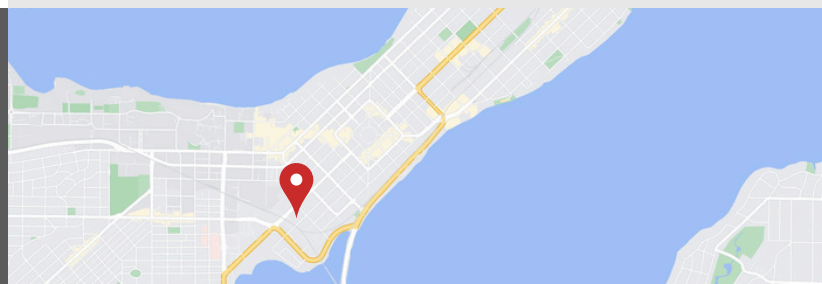
JUDY@DELTA-PROPERTIES.COM

WWW.DELTA-PROPERTIES.COM

SCAN TO VIEW

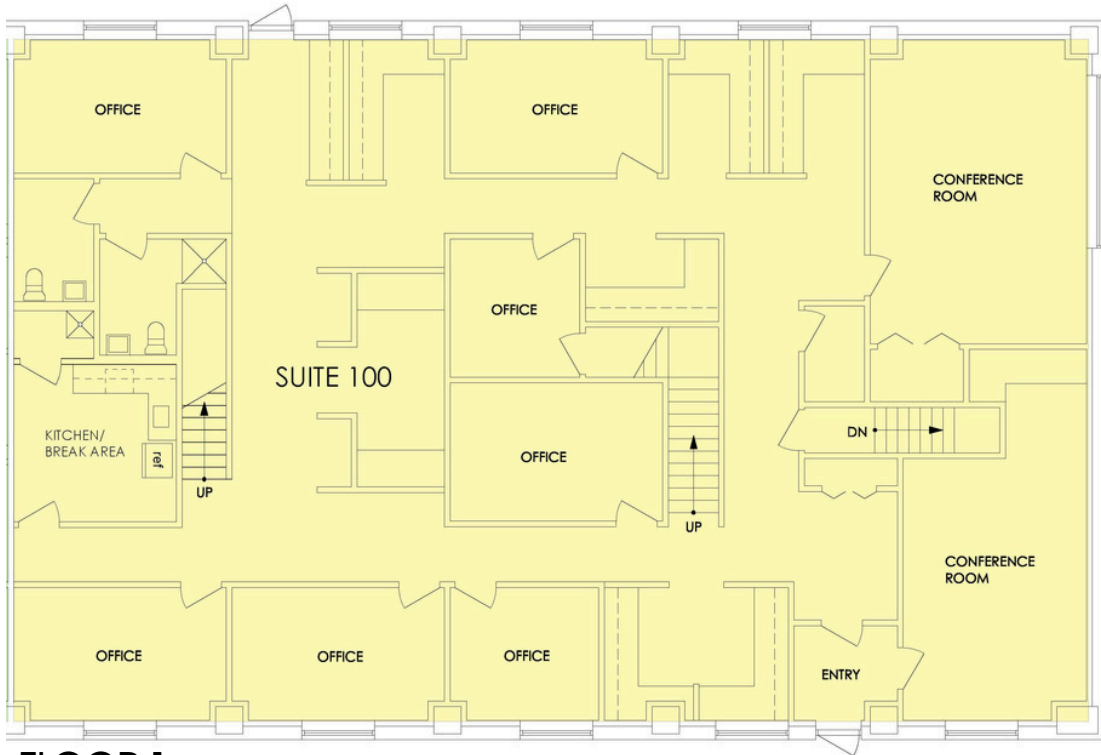


OUR WEBSITE

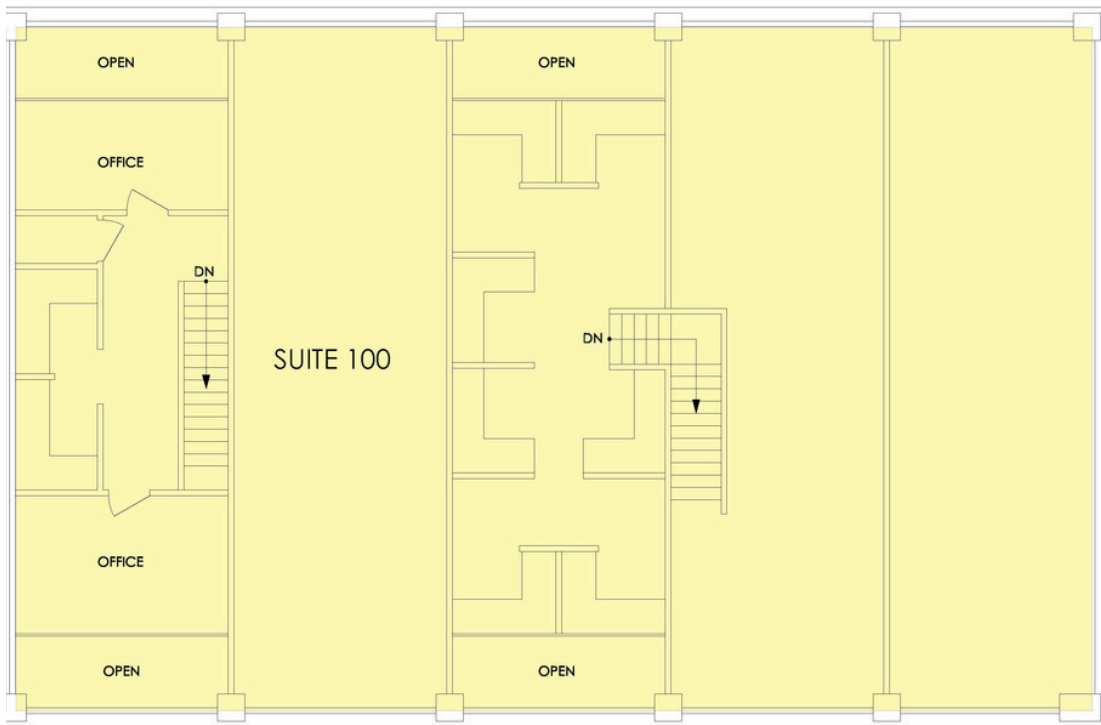


# 633 W MAIN ST

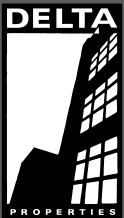
633 W MAIN STREET MADISON WI, 53703



FLOOR 1



MEZZANINE



(608)251-3337  
JUDY@DELTA-PROPERTIES.COM  
WWW.DELTA-PROPERTIES.COM

SCAN TO VIEW



OUR WEBSITE

