

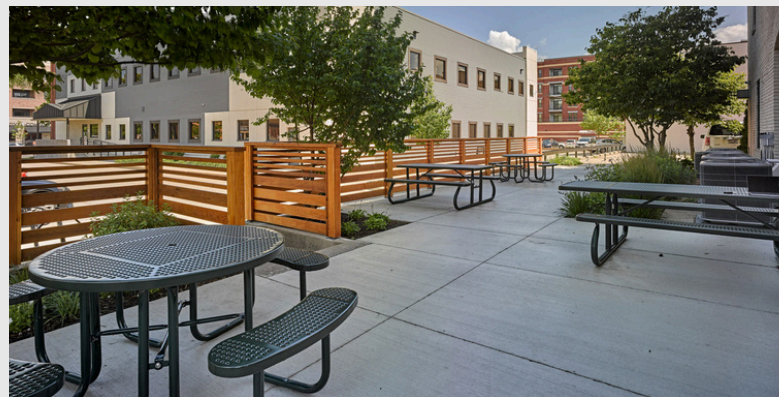
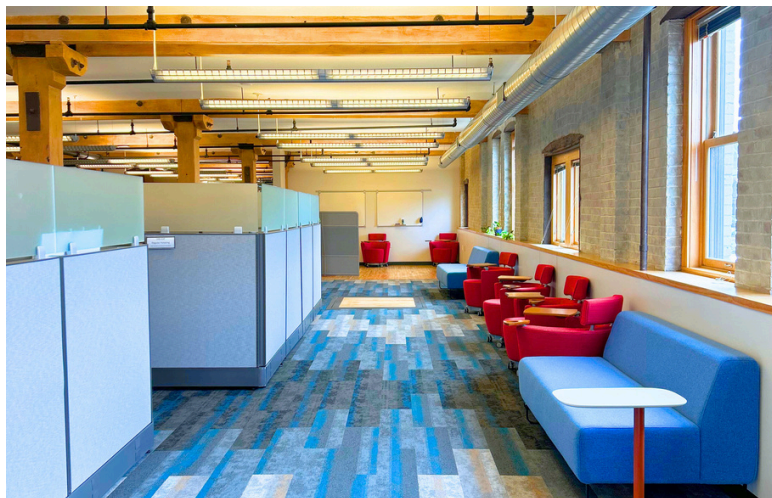
SUITE 100

634 W MAIN ST MADISON, WI 53703



AVAILABLE: 9/1/2024
SIZE: 3,867 - 7,744 SF

- 9 OFFICES, 1 CONFERENCE ROOM
- OPEN WORK AREA, RECEPTION & KITCHEN
- ABILITY TO BE DIVIDED
- EXPOSED BRICK, WOOD BEAMS & ABUNDANT NATURAL LIGHTING
- OPERABLE WINDOWS
- OUTDOOR PATIO
- ENERGY EFFICIENT LIGHT FIXTURES
- HIGH EFFICIENCY HVAC & MERV13 AIR FILTERS
- SHOWER FACILITIES
- ADA ACCESSIBLE
- AMPLE SURFACE PARKING
- IMMEDIATE BIKE PATH ACCESS
- CLOSE PROXIMITY TO CAPITOL SQUARE AND KOHL CENTER
- ONSITE MANAGEMENT



(608)251-3337

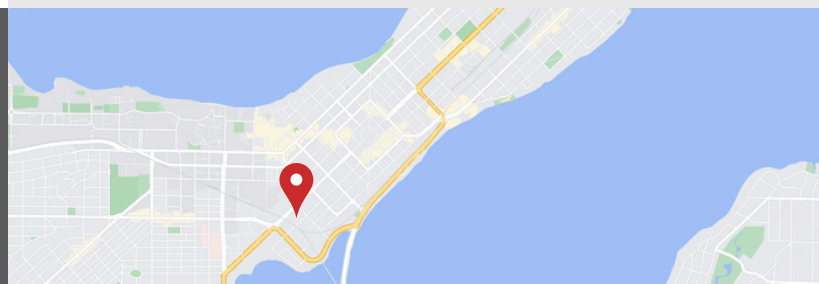
JUDY@DELTA-PROPERTIES.COM

WWW.DELTA-PROPERTIES.COM

SCAN TO VIEW

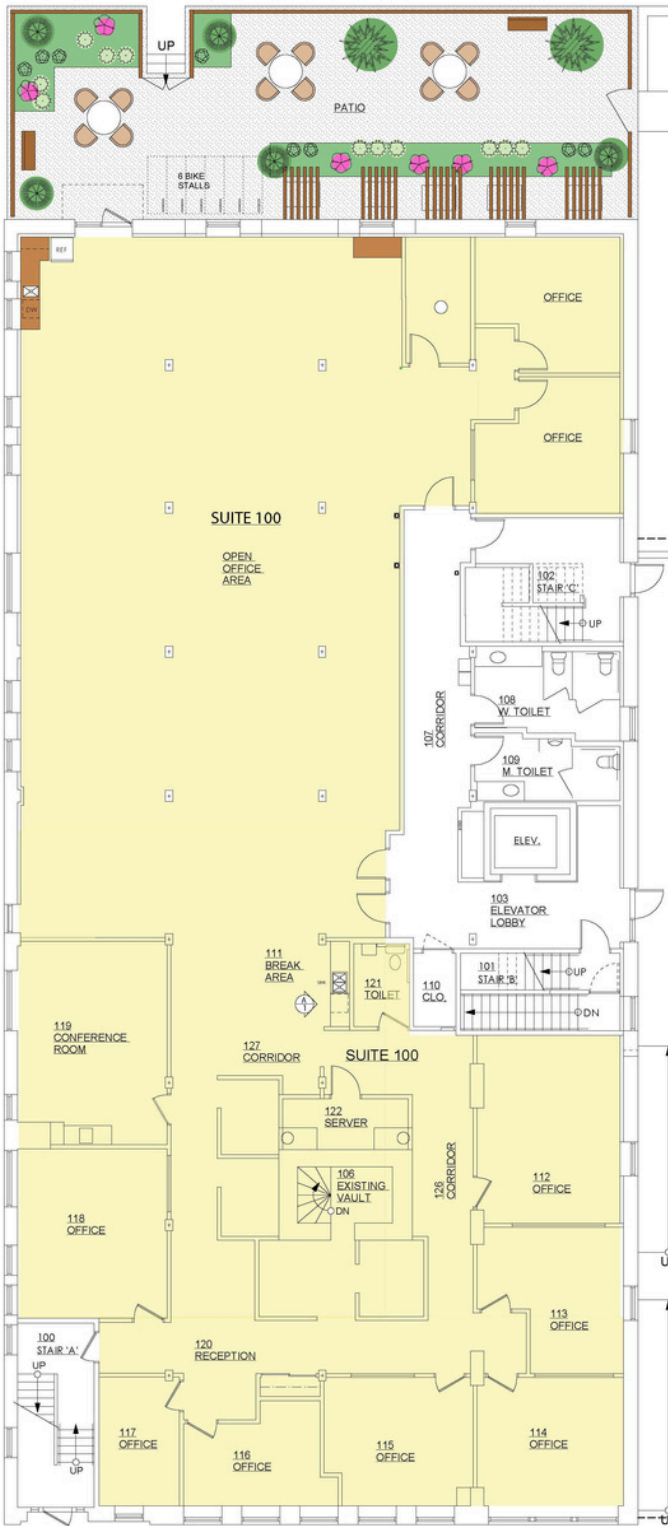


OUR WEBSITE

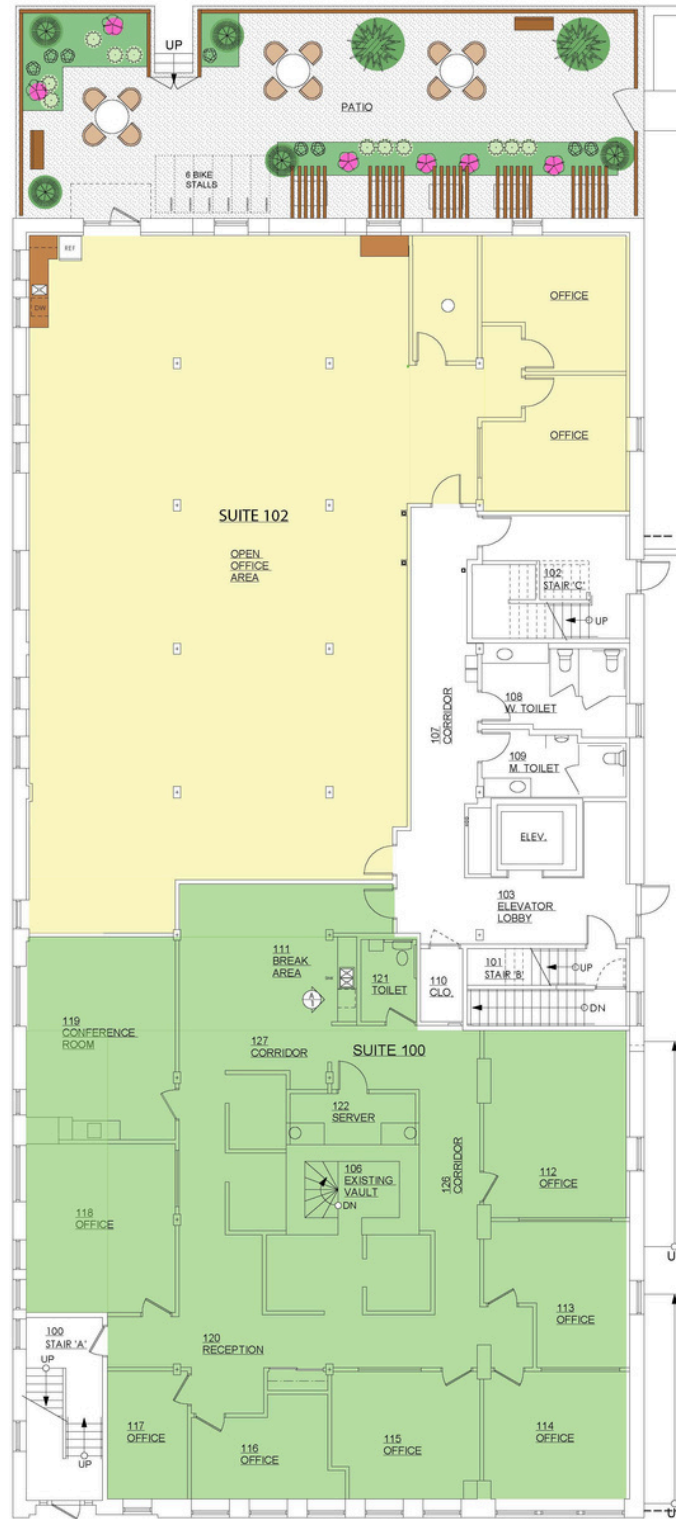


SUITE 100

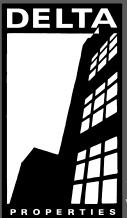
634 W MAIN ST MADISON, WI 53703



EXISTING FLOORPLAN



CONCEPTUAL DIVIDED FLOORPLAN



(608)251-3337

JUDY@DELTA-PROPERTIES.COM

WWW.DELTA-PROPERTIES.COM

SCAN TO VIEW



OUR WEBSITE

