

# SUITE 100

634 W MAIN ST MADISON, WI 53703



- AVAILABLE: NOW**  
**SIZE: 3,539 SF**
- 7 PRIVATE OFFICES/MEETING ROOMS
  - OPEN WORK AREA, RECEPTION & KITCHEN
  - EXPOSED BRICK, WOOD BEAMS & ABUNDANT NATURAL LIGHTING
  - OPERABLE WINDOWS
  - OUTDOOR PATIO
  - ENERGY EFFICIENT LIGHT FIXTURES
  - HIGH EFFICIENCY HVAC & MERV13 AIR FILTERS
  - SHOWER FACILITIES
  - ADA ACCESSIBLE
  - AMPLE SURFACE PARKING
  - IMMEDIATE BIKE PATH ACCESS
  - CLOSE PROXIMITY TO CAPITOL SQUARE AND KOHL CENTER
  - ONSITE MANAGEMENT



(608)251-3337

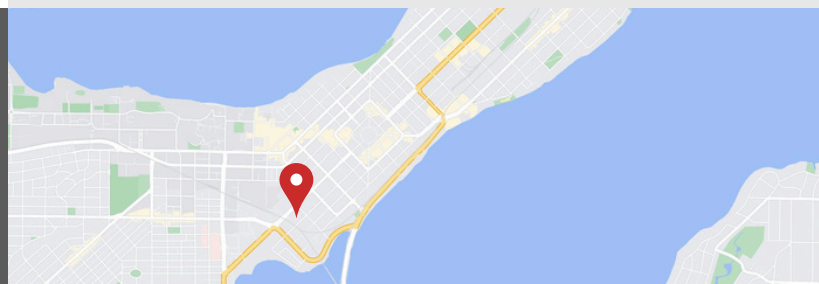
JUDY@DELTA-PROPERTIES.COM

WWW.DELTA-PROPERTIES.COM

SCAN TO VIEW

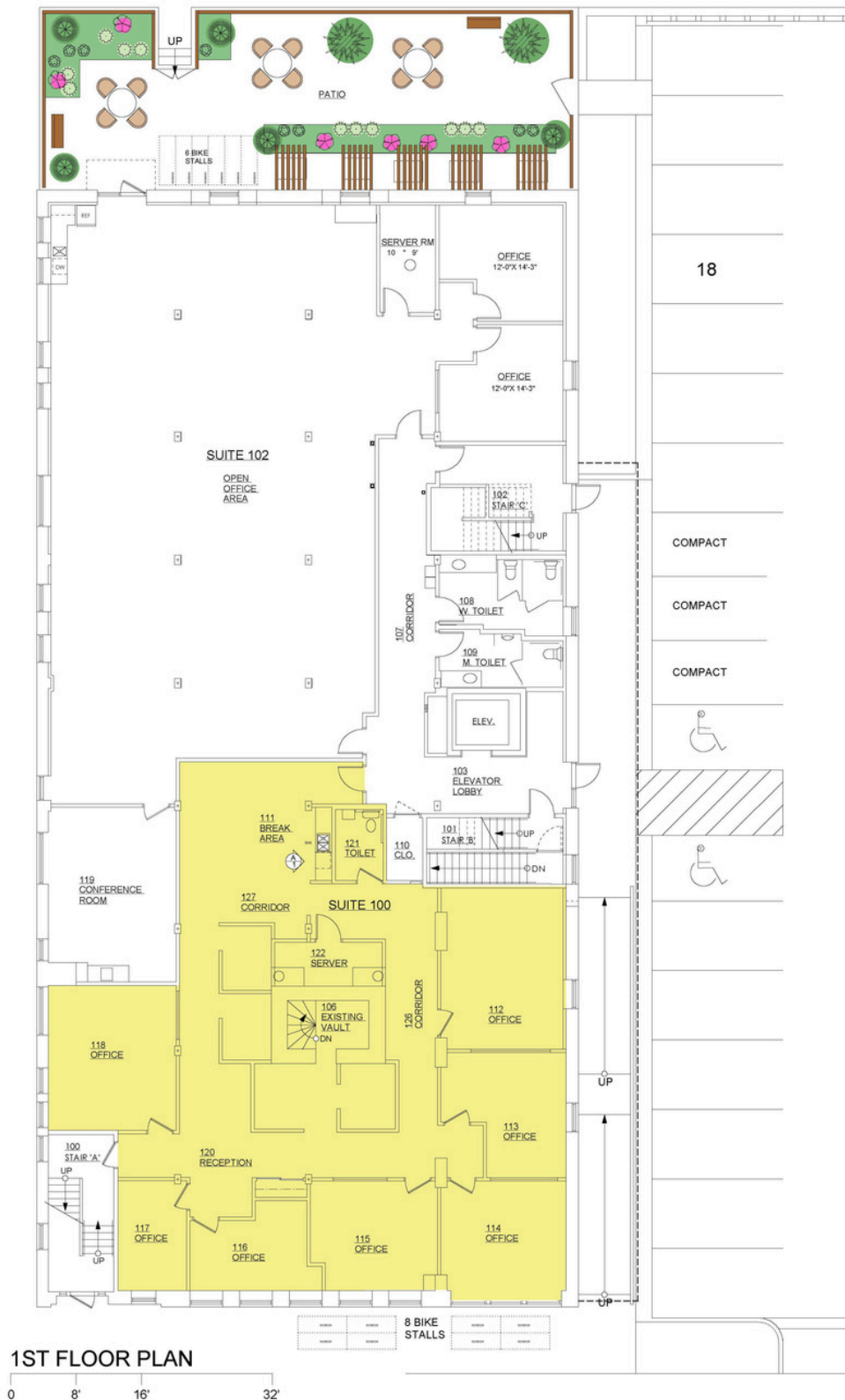


OUR WEBSITE



# SUITE 100

634 W MAIN ST MADISON, WI 53703



1ST FLOOR PLAN

0 8' 16' 32'



(608)251-3337  
JUDY@DELTA-PROPERTIES.COM  
WWW.DELTA-PROPERTIES.COM

SCAN TO VIEW



OUR WEBSITE

