

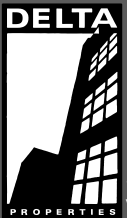
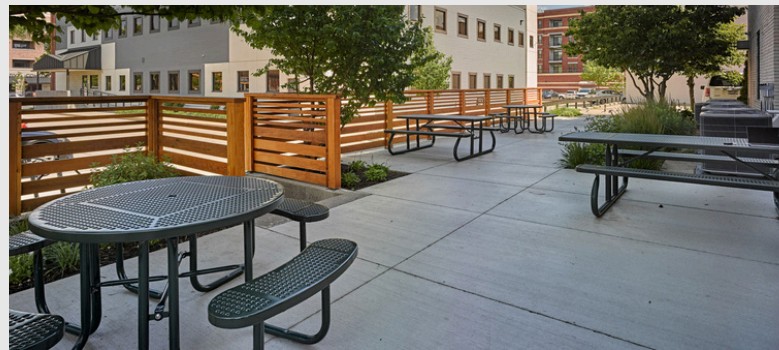
SUITE 200

634 W MAIN STREET MADISON, WI 53703



AVAILABLE: NOW
SIZE : 2,244 SF

- 3 LARGE PRIVATE OFFICES
- 1 CONFERENCE ROOM
- OPEN WORK AREA
- KITCHEN AREA
- EXPOSED BRICK, WOOD BEAMS & ABUNDANT NATURAL LIGHTING
- OPERABLE WINDOWS
- ENERGY EFFICIENT LIGHT FIXTURES
- HIGH EFFICIENCY HVAC & MERV13 AIR FILTERS
- SHOWER FACILITIES
- ADA ACCESSIBLE
- AMPLE SURFACE PARKING
- IMMEDIATE BIKE PATH ACCESS
- OUTDOOR PATIO
- CLOSE PROXIMITY TO CAPITOL SQUARE AND KOHL CENTER
- ONSITE MANAGEMENT



(608)251-3337

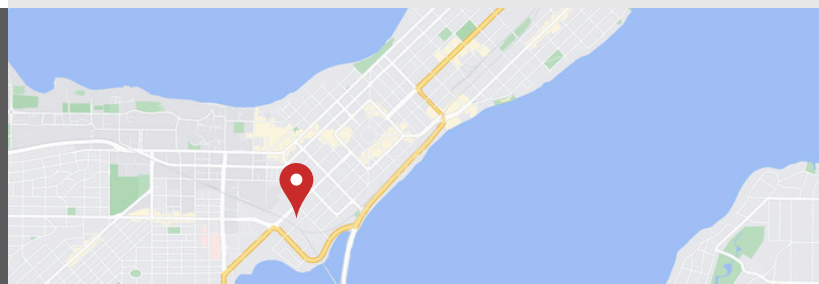
JUDY@DELTA-PROPERTIES.COM

WWW.DELTA-PROPERTIES.COM

SCAN TO VIEW

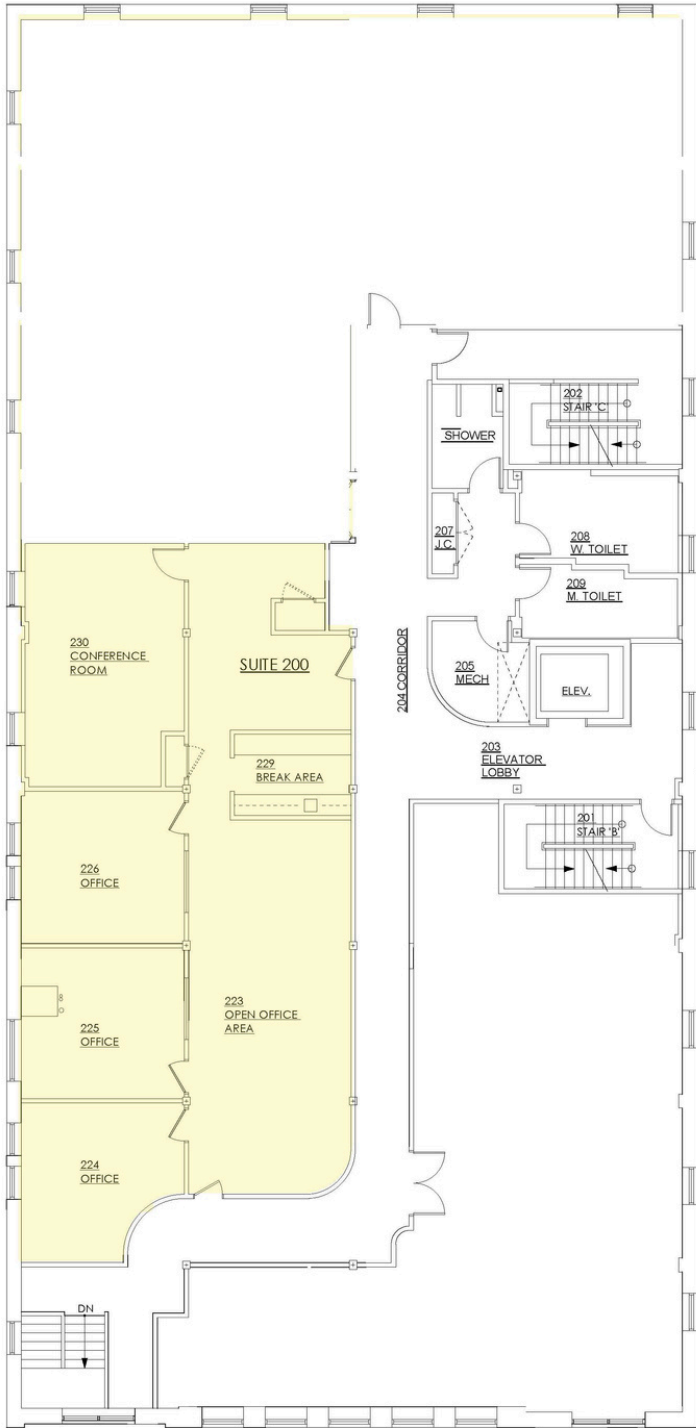


OUR WEBSITE

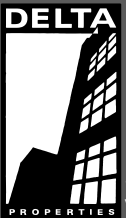


SUITE 200

634 W MAIN STREET MADISON, WI 53703



EXISTING FLOOR PLAN

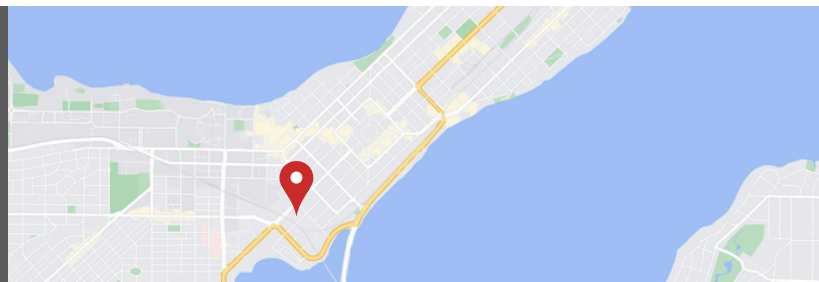


(608)251-3337
JUDY@DELTA-PROPERTIES.COM
WWW.DELTA-PROPERTIES.COM

SCAN TO VIEW

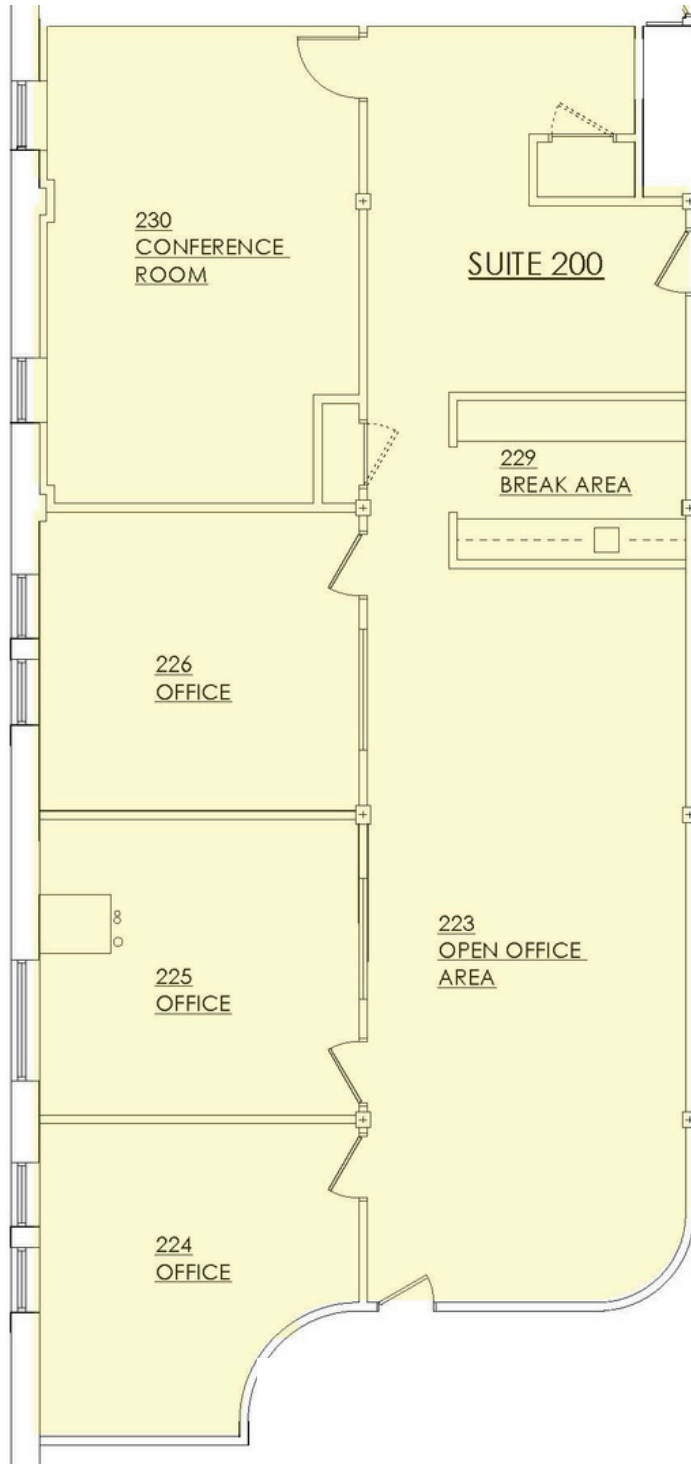


OUR WEBSITE

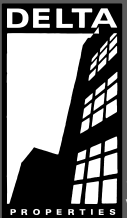


SUITE 200

634 W MAIN STREET MADISON, WI 53703



EXISTING FLOOR PLAN



(608)251-3337

JUDY@DELTA-PROPERTIES.COM

WWW.DELTA-PROPERTIES.COM

SCAN TO VIEW



OUR WEBSITE

